

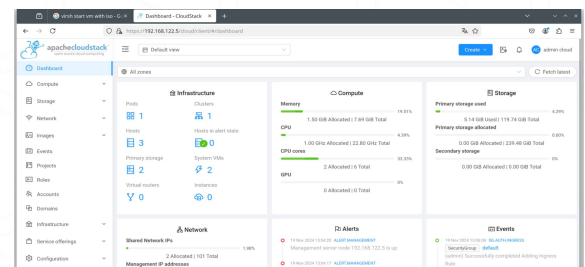
LINBIT® CloudStack® HCI Appliance

Set up your Open Source HCI Cloud

Our VMware alternative choice CloudStack is an IaaS platform that pools computing resources to build public, private, and hybrid IaaS clouds. CloudStack manages the network, storage, and compute resources of nodes that make up a cloud infrastructure.

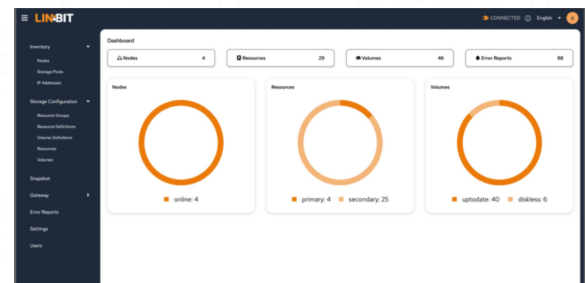
Apache CloudStack

Apache CloudStack™ is an open source software system designed to deploy and manage large networks of virtual machines, as a highly available, highly scalable Infrastructure as a Service (IaaS) cloud computing platform.



LINBIT SDS

LINBIT SDS is a comprehensive storage solution tailored for private cloud infrastructure. It includes the DRBD kernel driver, LINSTOR volume manager, an intuitive GUI that simplifies cluster management, and 24x7 support.



Appliance Highlights

- Convenient quick setup wizard
- LINBIT SDS as primary storage in CloudStack
 - Snapshots and snapshot shipping for disaster recovery
 - Optional encryption at rest
 - Optional encryption in transit
 - Optional RDMA instead of TCP/IP
 - Thin provisioning
- Comprehensive LINBIT SDS GUI
- Comprised of reliable open source software
- Highly available NFS export as CloudStack secondary storage
- Many CloudStack features
 - Multi-zone
 - Complex networking
 - Multi-Tenant (Domains)

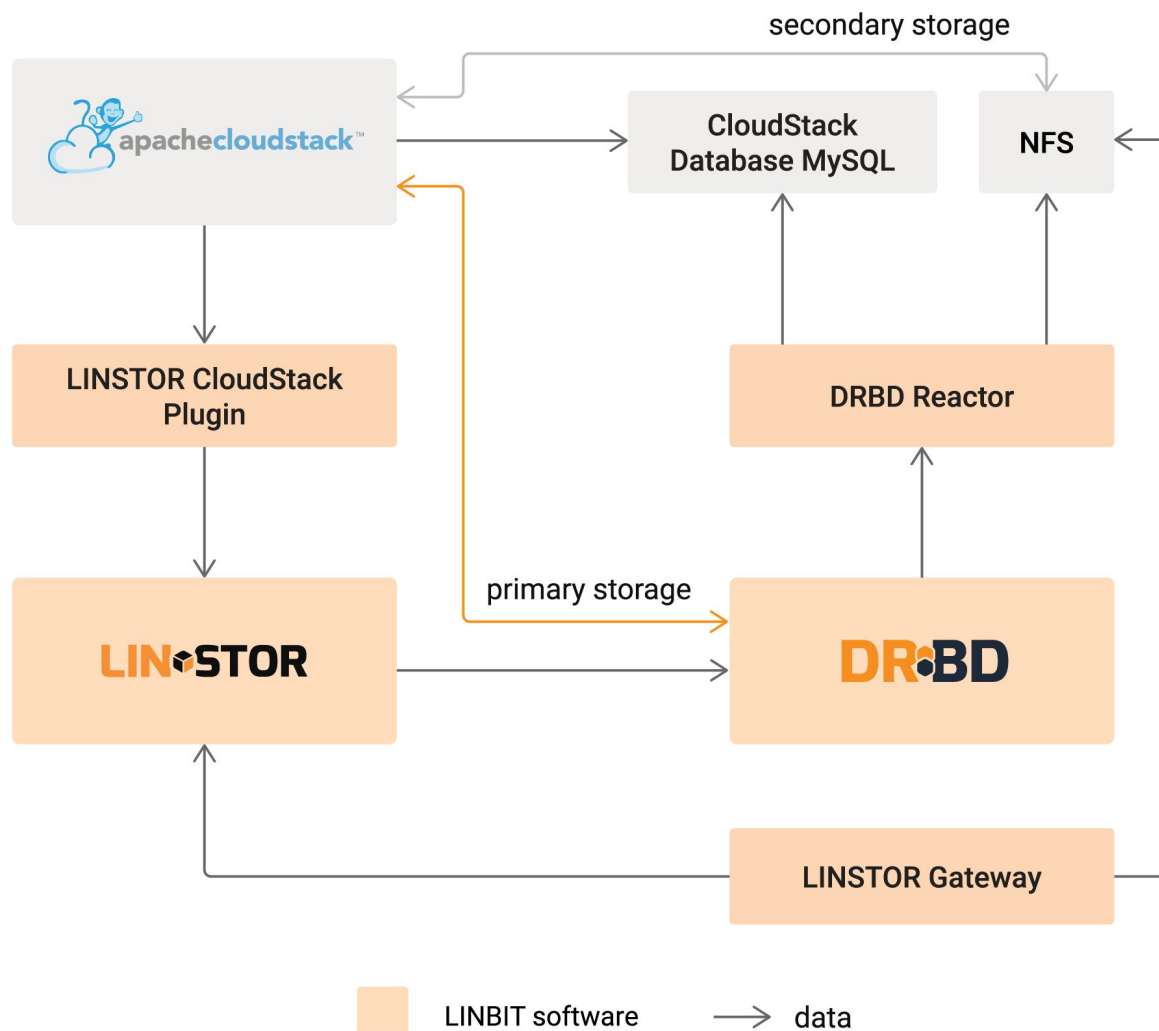
Contact us

INTERNATIONAL
+43-1-8178292-0
sales@linbit.com

USA
+1-503-573-1262
sales@linbit.com



LINBIT® CloudStack® HCI Appliance diagram



LINBIT SDS® is preconfigured for Apache CloudStack® in the LINBIT CloudStack® HCI appliance. Within the appliance, DRBD® Reactor is used to make services like the CloudStack MySQL database and NFS export for secondary storage highly available. The LINSTOR CloudStack plugin

translates requests from CloudStack into LINSTOR commands, which create the DRBD resources used for VM disk images as primary storage. LINSTOR Gateway is used by the LINBIT CloudStack® HCI Appliance installation wizard to automate parts of the setup process so you don't have to.

Contact us

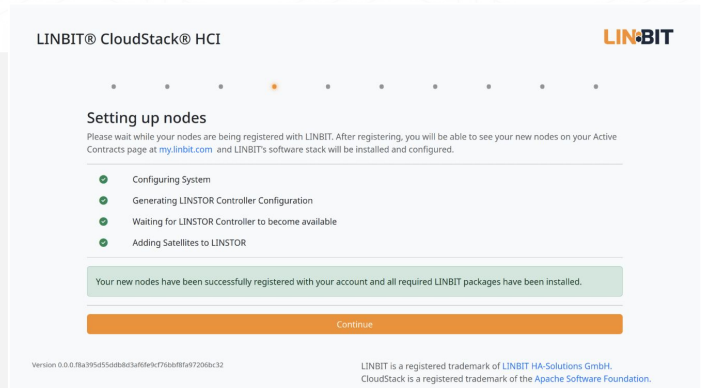
INTERNATIONAL
+43-1-8178292-0
sales@linbit.com

USA
+1-503-573-1262
sales@linbit.com



Easy to Install, Easy to Use

We deliver the LINBIT® CloudStack® HCI Appliance as an ISO file. All initial cluster configuration steps are done via the installation wizard – **no Linux skills required!**



Step-by-Step Installation Guide

1. Prepare Hardware

Rack and cable servers, ensure BIOS/UEFI settings are optimized, and verify all nodes meet LINBIT CloudStack HCI Appliance hardware requirements.

2. Create Installation Medium

LINBIT CloudStack HCI Appliance media can be PXE boot, USB, virtual drives, or any other medium commonly used to install modern Linux operating systems.

3. Boot Machines and Run LINBIT Installer

Booting from the installation medium will present you with a menu option, “Install LINBIT CloudStack HCI”. Selecting this option will begin the GUI driven installation process.

4. Verify Deployment

Once the installation is complete, check node status, storage status, and typical CloudStack dashboards; ensure VM provisioning and failover functionality operate as expected.

Use Cases

Containerization

- ✓ Kubernetes
- ✓ OpenShift
- ✓ Rancher
- ✓ MicroK8s
- ✓ Nomad

Private Cloud

- ✓ Virtualization
- ✓ Self-service
- ✓ Multi-tenant
- ✓ Resilient

Public Cloud

- ✓ Multi-tenant
- ✓ API and Web portals
- ✓ Integrated billing
- ✓ Customization

Contact us

INTERNATIONAL
+43-1-8178292-0
sales@linbit.com

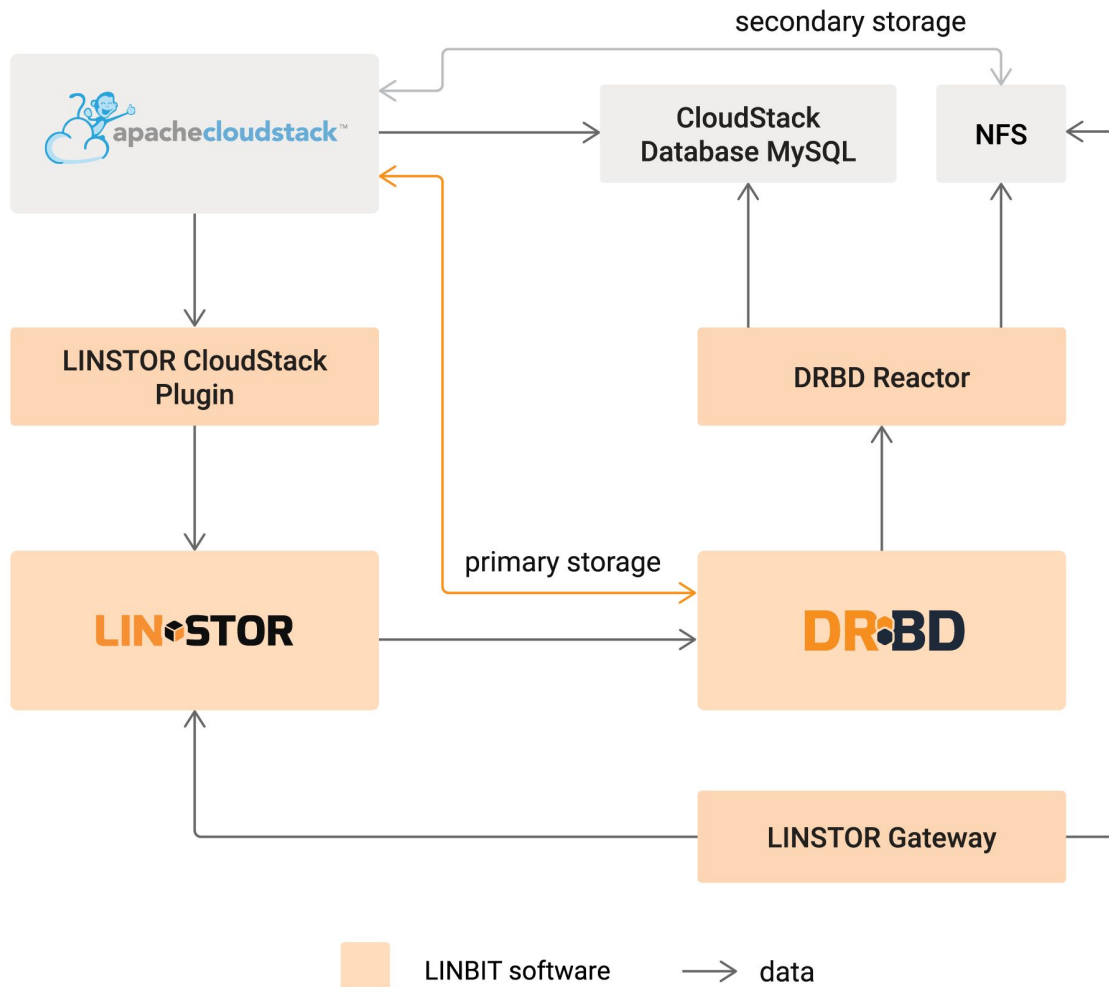
USA
+1-503-573-1262
sales@linbit.com



LINBIT® CloudStack® HCI Appliance

Set up your Open Source HCI Cloud

Our VMware alternative choice CloudStack is an IaaS platform that pools computing resources to build public, private, and hybrid IaaS clouds. CloudStack manages the network, storage, and compute resources of nodes that make up a cloud infrastructure.



LINBIT SDS® is here preconfigured for Apache CloudStack®. Within the appliance, DRBD® Reactor is used to make services like the CloudStack MySQL database and NFS export for secondary storage highly available. The LINSTOR CloudStack plugin translates requests from CloudStack into LINSTOR commands, which create the DRBD resources used for VM disk images as primary storage. LINSTOR Gateway is used by the Appliance installation wizard to automate parts of the setup process.

Contact us

INTERNATIONAL
+43-1-8178292-0
sales@linbit.com

USA
+1-503-573-1262
sales@linbit.com

